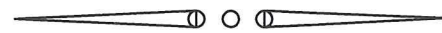


STATE OF OKLAHOMA  
DEPARTMENT OF TRANSPORTATION



LAND TIES

Land ties for this survey were from found existing corners filed by local surveyors and corners set by standard methods from those corners. The original surveys for this area were done in the 1870's and no original monuments were found. The land corners used for this survey are those corners being used for present day surveys.

CONTROL DATUM

Horizontal control datum is Oklahoma State Plane Coordinate System NAD83(1993)Lambert Projection North Zone. The distances, coordinates and elevations shown in this survey are U.S. Survey Feet. All angles and bearings shown are in degrees, minutes and seconds.

Vertical datum is NAVD88. A bench mark list is included hereon.

CENTERLINE OF SURVEY

The center line of this survey was established by the consulting engineer for this project and was placed on the ground by Delta surveying & Engineering Co. This centerline or CRL has been set and the major control points, PI's PC's, PT's and POT's have been set and referenced as per ODOT requirements as best as is practical and possible.

SURVEY CONTROL

Horizontal control for this project was established by Aerial Data Services for aerial photo control and was then used by Delta Surveying & Engineering Co. for the land surveys and miscellaneous topographic surveys on the site. A network of about 60 monuments were set by ADS by static GPS using points Albert, K218, U216, and T194.

Vertical control was established by ADS on these same 60 monuments by differential leveling. The reported closures were within their required tolerance.

This horizontal and vertical control was established at the beginning of this project and is being used for every facet of the work.

Survey methods include Static GPS, RTK GPS, Electronic Total Station, Data Collection and Differential Leveling.

STATE OF OKLAHOMA  
DEPARTMENT OF TRANSPORTATION

F.A.P. No. OKCY-XTWN-(070)TI

Job/Piece 17428 (80)

Control Section No.55-69

LAND SURVEYOR'S CERTIFICATION

I hereby certify that all land and property sub-division distances, angles, corners and monumentation made or used in conjunction with this survey and depicted or recorded herein or hereon were recovered, established or re-established in substantial conformity with:

- applicable instructions contained in the U.S. Government Bureau of Land Management publication "Manual of Surveying Instructions";
- its supplement, "Restoration of Lost or Obliterated Corners and Subdivision of Sections";
- "Oklahoma Minimum Standards for the Practice of Land Surveying" as adopted by the State Board of Registration for Professional Engineers and Land Surveyors; and
- sound land surveying practices;

including a thorough search, study, analysis and consideration of all existing records and field evidence.

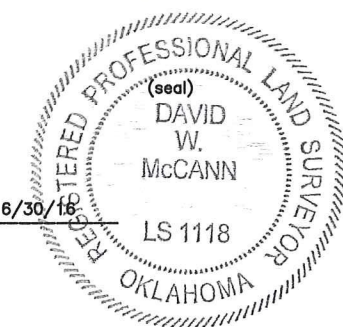
I further certify that all survey monuments depicted exist and that all land survey work was done by me or under my direct supervision and that it is true, accurate and correct to the best of my knowledge and belief.

Dated this 20TH day of APRIL, 2016.

Land Surveyor David W. McCann  
Signature  
David W. McCann  
Delta Surveying Co.

Oklahoma Registered Land Surveyor No. 1118

Certificate of Authorization No. 990 Exp. Date 6/30/18



BENCHMARK TABLE					
POINT #	STATION OFFSET	NORTH	EAST	ELEVATION	DESCRIPTION
Benchmark #212	STA. 179+46.88 371.29' LT.	N 169317.842	E 2110165.007	Elev. =1194.896'	Set cut "X" T/C PCR SW-W Lee & Reno
* Benchmark #213	STA. 191+04.51 640.47' LT.	N 169325.979	E 2111064.771	Elev. =1193.894'	Set cut "X" T/C PCR SW-W Reno & Walker
* Benchmark #214	STA. 201+88.47 702.31' LT.	N 169329.306	E 2112144.593	Elev. =1193.143'	Found cut "X" T/C PC SE-E Reno & Harvey
Benchmark #224	STA. 173+67.56 430.45' RT.	N 168911.796	E 2109263.144	Elev. =1193.980'	Set cut "X" at Top of Curb SW 2nd Francis
Benchmark #225	STA. 196+80.81 394.39 RT.	N 168232.810	E 2111592.502	Elev. =1193.160'	Set cut "X" on Top of Curb NW-N Ramp at SW 3rd

\* Destroyed due to construction of Project #180.

*This Plat of Survey Meets The Oklahoma Minimum Standards For The Practice Of Land Surveying As Adopted By The Oklahoma State Board Of Registration For Professional Engineers And Land Surveyors.*

DESIGN	
DRAWN	LJ
CHECKED	DWM
APPROVED	

OKLAHOMA DEPARTMENT OF TRANSPORTATION

Section 4, T11N-R3W, IM

PROJ.FCT NO. OKCY-XTWN (079) STATE JOB NO. 17428(88) SHEET NO. S3